

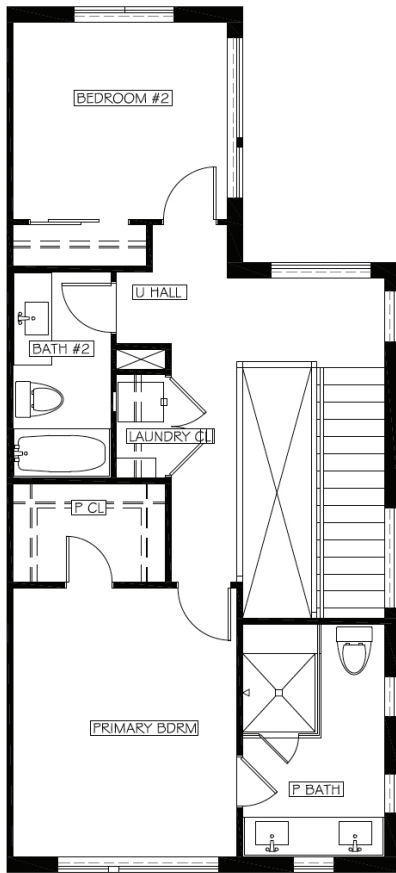


End Unit: Starting at \$1,379,000

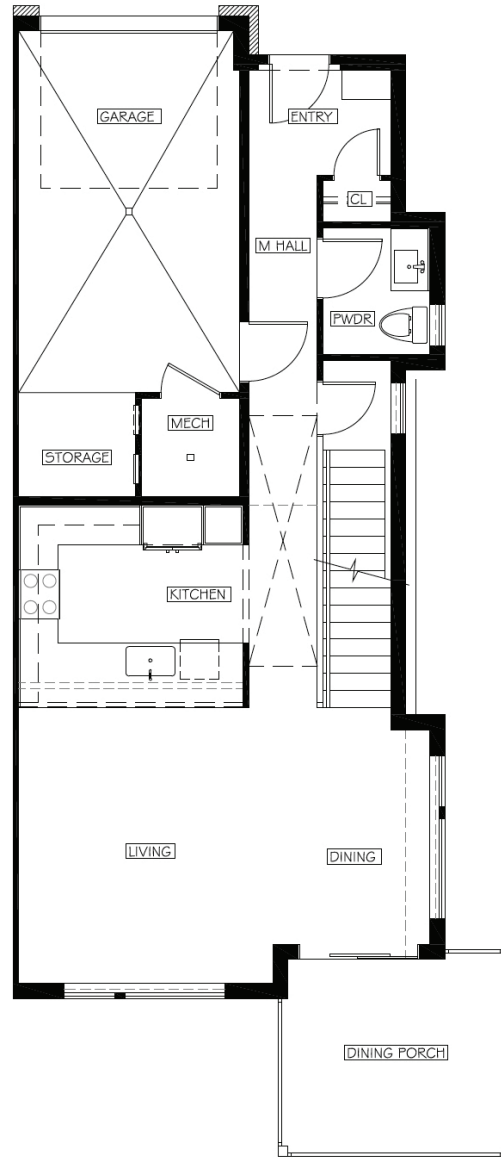
Base: 1,698 SF Livable and 2,207 Total SF, 3 Beds, 2 Baths, Powder Room, Second Family/Rec Room, One Car Garage, Large Exterior Deck and Patio

Options: Additional Bedroom and Bathroom in basement, and Wet Bar in Basement

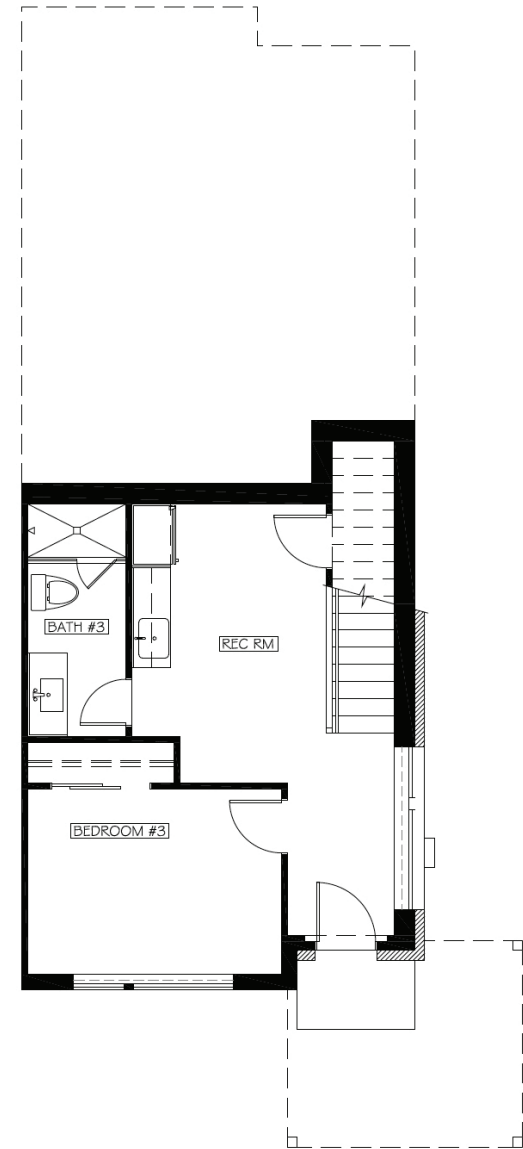




Second Floor



First Floor



Lower Floor

All images are artistic representations for conceptual purposes and are not exact depictions of the final product. Features, dimensions, finishes, pricing, square footages, and available options are current as of publication and subject to change without notice due to construction variances or design updates. Please contact the Haymeadow sales team for current availability, lot selection, and pricing.

