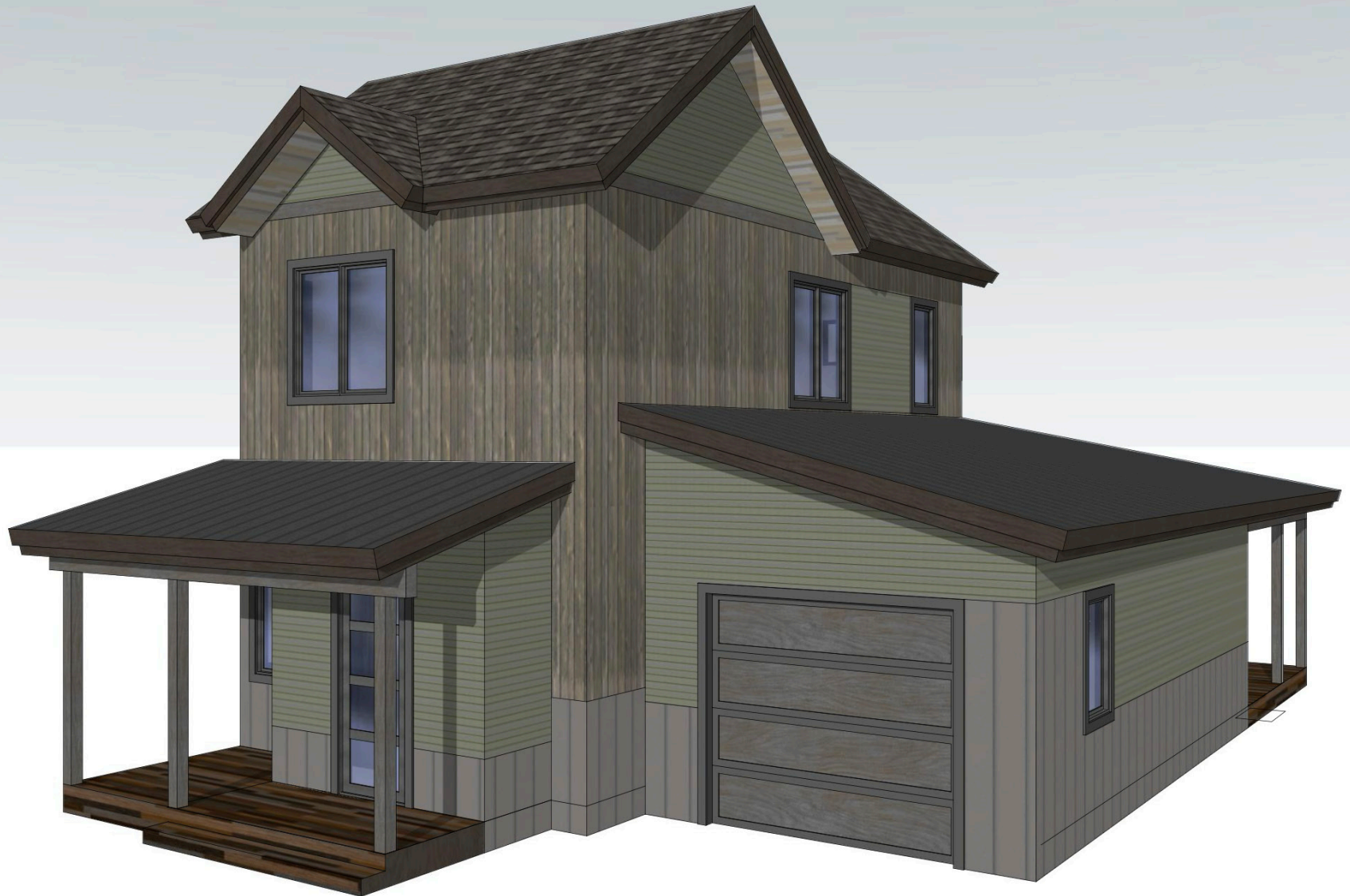
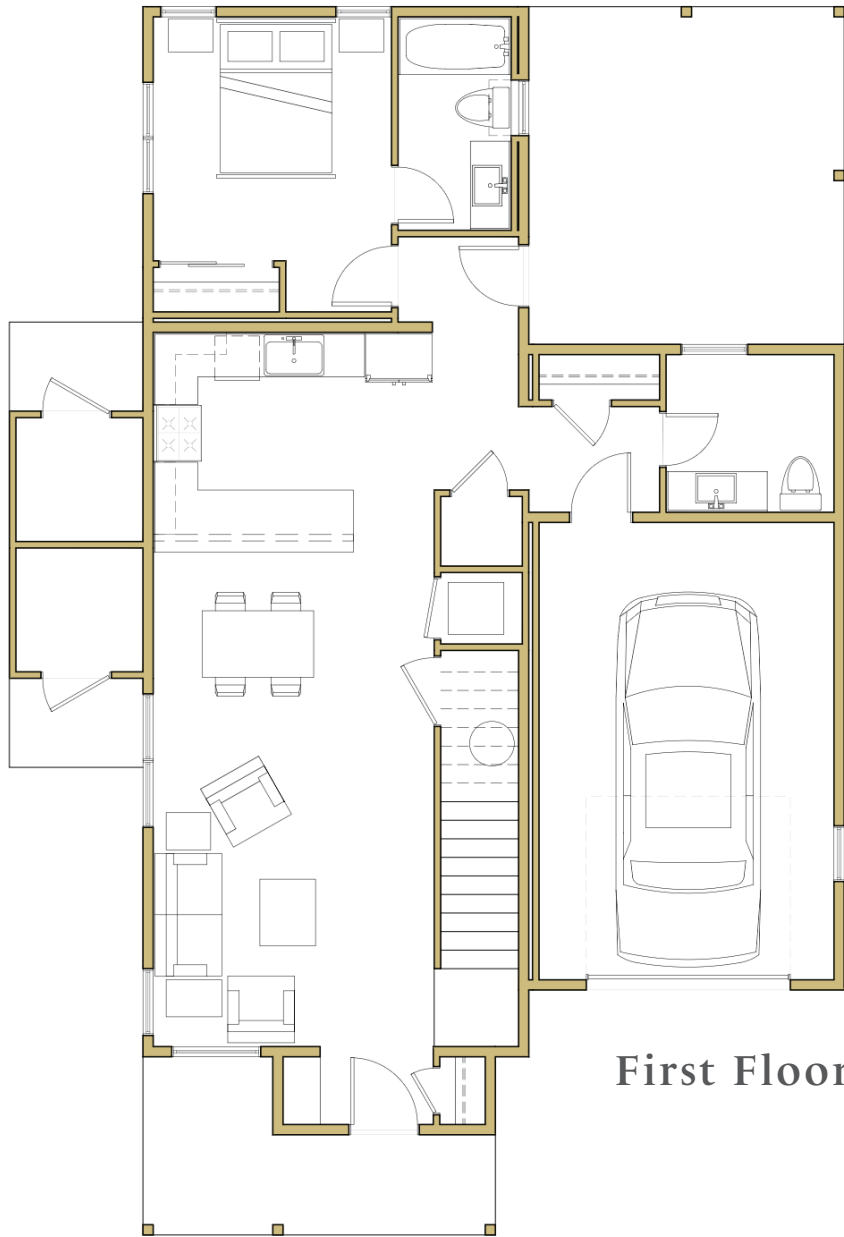




Larkspur

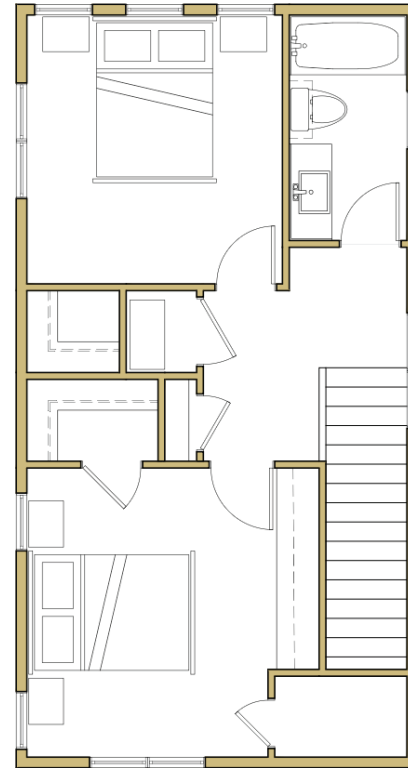
Base: 1,486 SF Livable and 1,856 Total SF, 3 Beds, 2 Baths, Primary 1st Floor Living, Powder Room, 1 Car Garage, Two Exterior Storage Rooms, Large Exterior Patios





First Floor

Second Floor



All images are artistic representations for conceptual purposes and are not exact depictions of the final product. Features, dimensions, finishes, pricing, square footages, and available options are current as of publication and subject to change without notice due to construction variances or design updates. Please contact the Haymeadow sales team for current availability, lot selection, and pricing.

